

TYPES AYP, AYPO

HYPLUG™ Adapters

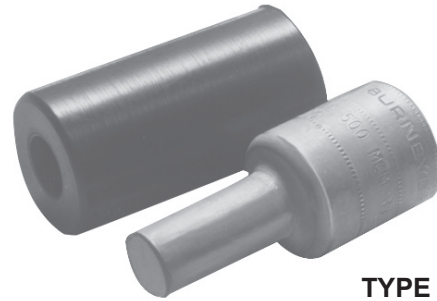
UL Listed 90° C, Up to 35 kV ♦



AL9CU



AL9

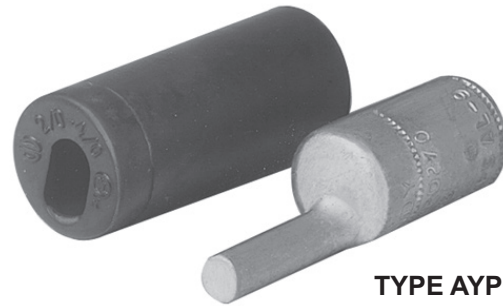


TYPE AYP

Types AYP and AYPO aluminum compression adapters are designed for reliable termination of aluminum and copper conductor in mechanical connectors. Typical applications include mechanical connectors in molded case circuit breakers, panel board equipment, and meter sockets.

Features & Benefits

- Aluminum pin terminals are dual rated to accommodate both copper and aluminum wire and are indicated with AL-CU on the connector:
 - AL9CU indicates the terminal can accommodate aluminum and copper wire and is UL Listed 90°C, up to 35kV
 - AL7CU indicates the terminal can accommodate aluminum and copper wire and is UL Listed 75°C, up to 35kV
- Short pin length design permits easy installation in limited space applications; rated for the full ampacity of the incoming conductor
- Smooth surface on the pin allows for greater contact area and electrical connectivity
- Solid pin design eliminates “how tight is tight” torque requirement problem and eliminates over torquing on stranded pin adapters that can result in damaged strands increasing resistance
- Barrel is designed with an internal chamfer at the wire entry to ensure smooth insertion of the wire, preventing possible damaging of the wire strands during insertion
- Electro-tin plated unless otherwise specified to reduce galvanic corrosion (bimetallic) and resist corrosive elements
- Connectors are clearly marked with wire size, die index, color code, and crimp location bands
- Factory pre-filled with PENETROX™ Type A13 oxide inhibitor
- Color coded end caps are factory inserted in the barrels to match the die color code and prevent foreign materials from entering the barrel
- Aluminum oxidation is not easily detected but causes resistance in a connection; it is imperative the proper preparation takes place prior to making an aluminum-to-aluminum connection



TYPE AYPO

- Covers are supplied with connectors:
 - EPDM rubber covers are UL Listed/CSA Certified and rated up to 600 Volts and 90°C
 - Santoprene rubber covers are also UL Listed/CSA Certified and rated up to 600 Volts and 90°C
- The connector is offered with an in-line pin (Type AYP) and offset pin (Type AYPO) design
- Offset pin design provides added flexibility in limited space applications as the connectors can be rotated preventing wire interference when installing cable side-by-side to a mechanical connector
- Only 5 dies sets are necessary to install the complete line of HYPLUG™ adapters from #6 AWG up to 750 kcmil

Y / PAT644 DIELESS HYPRESS™

RANGE-TAKING CAPABILITIES

The following HYPLUG™ lugs and two way splices, when crimped with the Y / PAT644 DIELESS HYPRESS™ tool, produce the following range-taking capabilities for Aluminum Conductor only:

♦ For applications greater than 2000 Volts consult cable manufacturer for voltage stress relief instructions.

Aluminum Conductors Only					
Standard Wire Size	Expanded Wire Range	Standard Wire Size	Expanded Wire Range	Standard Wire Size	Expanded Wire Range
#6 AWG	#6 AWG	3/0 AWG	3/0 - #1 AWG	500 kcmil	500 kcmil - 4/0 AWG
#4 AWG	#4 - #6 AWG	4/0 AWG	4/0 - #1 AWG	600 kcmil	600 - 250 kcmil
#2 AWG	#2 - #6 AWG	250 kcmil	250 kcmil - 1/0 AWG	750 kcmil	750 - 500 kcmil
#1 AWG	#1 - #2 AWG	300 kcmil	300 kcmil - 2/0 AWG	900 kcmil	900 - 600 kcmil
1/0 AWG	1/0 - #1 AWG	350 kcmil	350 kcmil - 3/0 AWG		
2/0 AWG	2/0 - #1 AWG	400 kcmil	400 kcmil - 4/0 AWG		

TYPES AYP, AYPO (Continued)



AL9CU



AL9

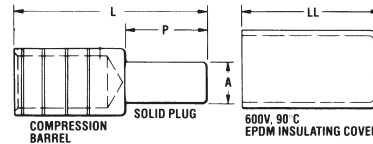


Fig 1: TYPE AYP (Straight)

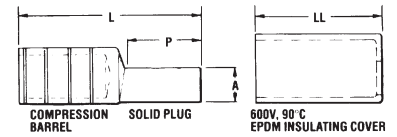
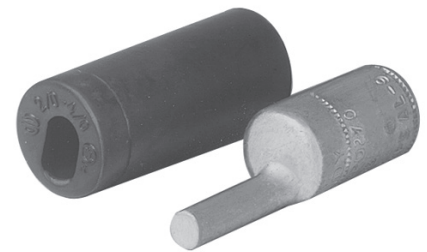


Fig 2: TYPE AYPO (Offset)

Catalog Number	AL Class B CU Class B, C	Copper Flex	Fig. No.	Dimensions					Installation Tooling ▲					Wire Strip Length						
				A ▼ Pin Dia.	Pin Size Equiv.	Overall Length	L Pin Length	LL Cover Length	HYTOOL™		35 & 750, 46* Series		▲ Die Index & Emboss.							
									Dieless Tools (# of crimps)	+ MD6	Die Number (# of crimps)	Color Code								
AYP6	6 AWG	#8 Class I, DLO	1	0.23	4 AWG	0.68	1.85	2.03	MY29-3 (2) ** 644 Series (1) 81K Series (1)	W241 (2)	U25ART (1)	Tan	296	1-1/16						
AYP4	4 AWG	#6 Class I, DLO	1	0.23	4 AWG	0.68	1.85	2.03												
AYP2	2 AWG	#4 Class I, DLO	1	0.23	4 AWG	0.68	1.85	2.03												
AYP1	1 AWG	#2 Class I, DLO	1	0.26	3 AWG	0.84	2.01	2.03												
AYP1/0	1/0 AWG	#1 Class I, DLO	1	0.29	2 AWG	0.84	2.01	2.03	MY29-3 (2) ** 644 Series (1) 81K Series (2)	W660 (4)	U28ART (2)	White	298	1-1/8						
AYPO2/0	2/0 AWG	1/0 Class I, DLO	2	0.33	1 AWG	1.09	2.70	2.23												
AYPO3/0	3/0 AWG	2/0 Class I, DLO	2	0.37	1/0 AWG	1.22	2.80	2.23												
AYPO4/0	4/0 AWG	3/0 Class I, DLO	2	0.42	2/0 AWG	1.22	2.80	2.23												
AYPO250	250 kcmil	4/0 Class I, DLO	1	0.47	3/0 AWG	1.16	2.63	2.54	Hydraulic: 644 Series (1) 81K Series (2)	—	U31ART (2)	Brown	299	1-1/8						
AYPO250	250 kcmil	4/0 Class I, DLO	2	0.47	3/0 AWG	1.22	2.98	2.54												
AYPO300	300 kcmil	262 kcmil DLO	2	0.53	4/0 AWG	1.34	3.08	2.54												
AYP350	350 kcmil	313 kcmil DLO	1	0.57	250 kcmil	1.34	2.75	2.54												
AYPO350	350 kcmil	313 kcmil DLO	2	0.57	250 kcmil	1.34	3.08	2.54												
AYPO400	400 kcmil	—	2	0.63	300 kcmil	1.60	3.43	2.81												
AYP500	500 kcmil	373 kcmil DLO	1	0.68	350 kcmil	1.60	3.08	2.81												
AYPO500	500 kcmil	373 kcmil DLO	2	0.68	350 kcmil	1.60	3.43	2.81												
AYPO600	600 kcmil	444 kcmil DLO	2	0.73	400 kcmil	1.64	4.02	3.69												
AYP750	700 - 750 kcmil	535 kcmil DLO	1	0.81	500 kcmil	1.76	3.79	3.69												
AYPO750	700 - 750 kcmil ±900 Compact AL	535 kcmil DLO	2	0.81	500 kcmil	1.76	4.16	3.69												
AYP900	900 kcmil AL &	—	1	0.91	650 kcmil	1.82	4.10	4.20							644 Series (1) 81K Series (3)	—	U39ART-2 (3)	Yellow	936	1-3/4
AYPO900	600 kcmil CU	—	2	0.91	650 kcmil	1.82	4.16	4.20												

Scratch brushing of all conductors before making installation is recommended

▲ See tooling section of this catalog for complete tool and die listings.

** For MY29-3 use aluminum index plate at 1/0 setting for sizes #6 through 1/0 or at 4/0 setting for sizes 2/0 through 4/0.

+ Not UL Listed with these tools.

* Use PUADP-1 adaptor with U dies in Y46 HYPRESS™.

■ Also accommodates compressed and compact conductors (except for 700 kcmil in 750 kcmil barrel).

‡ Tested with 644 series dieless tools only; not UL Listed with any tool on 900 Compact AL.

◆ For applications greater than 2000 Volts consult cable manufacturer for voltage stress relief instructions.

▼ For copper equivalent wire size see page O-11 (Aluminum 1350 Cable).

Notes: CSA certified for AL Conductor only.

All dimensions shown are for reference only.